

WIRING DIAGRAMS

DIAGRAM 1.
SMALL COMMERCIAL WIRE DIAGRAM
208-240V / 3PH

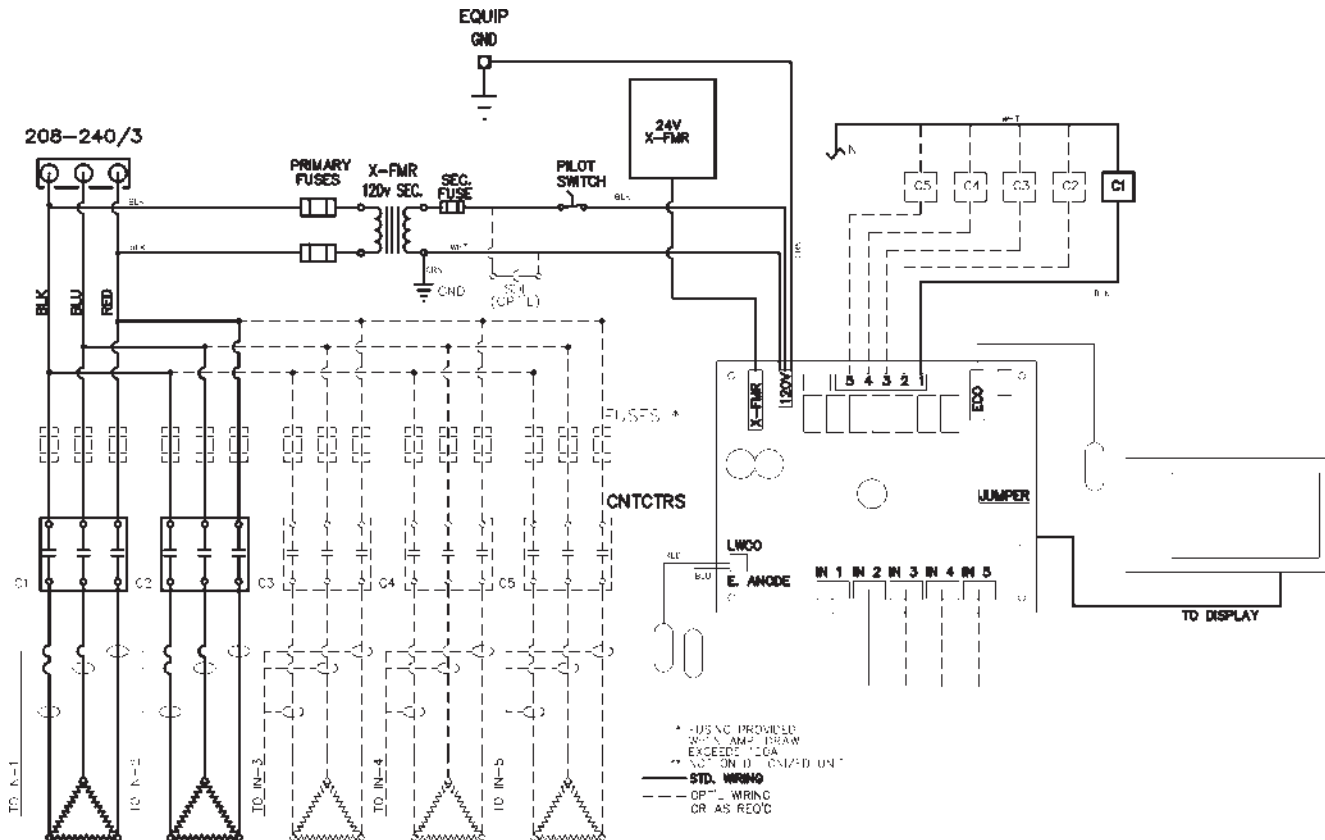
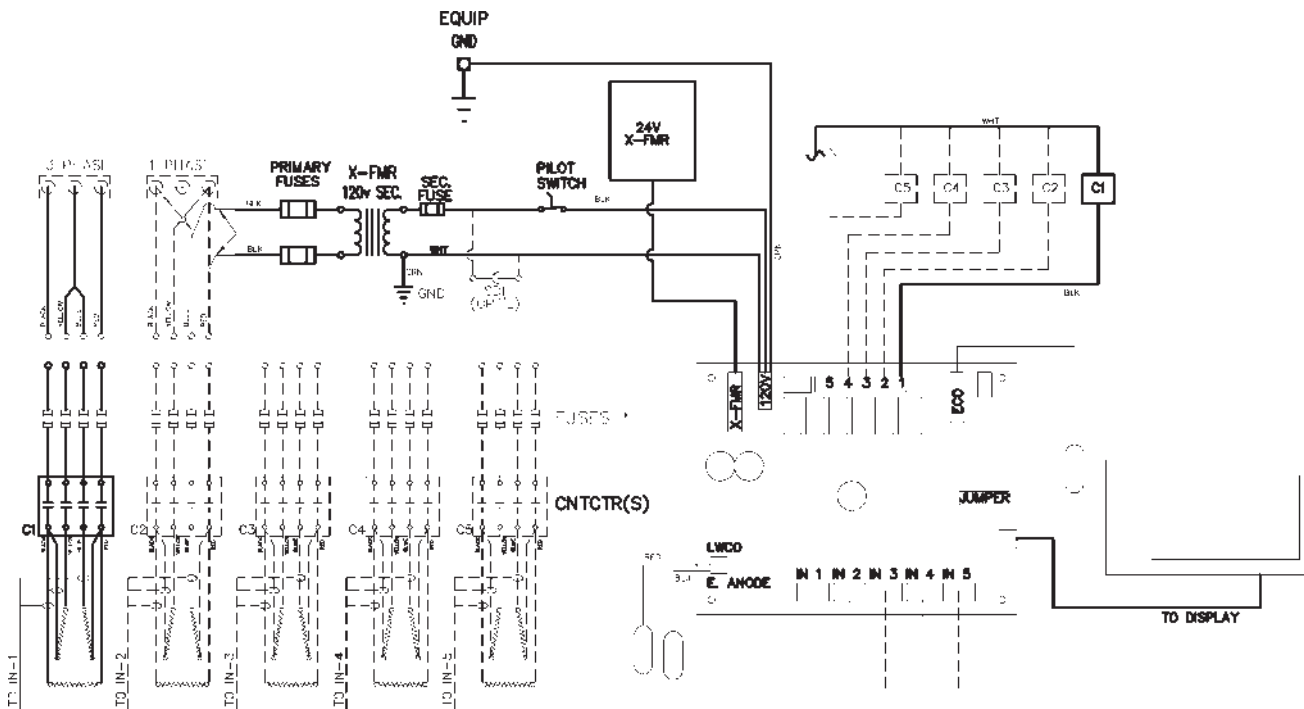


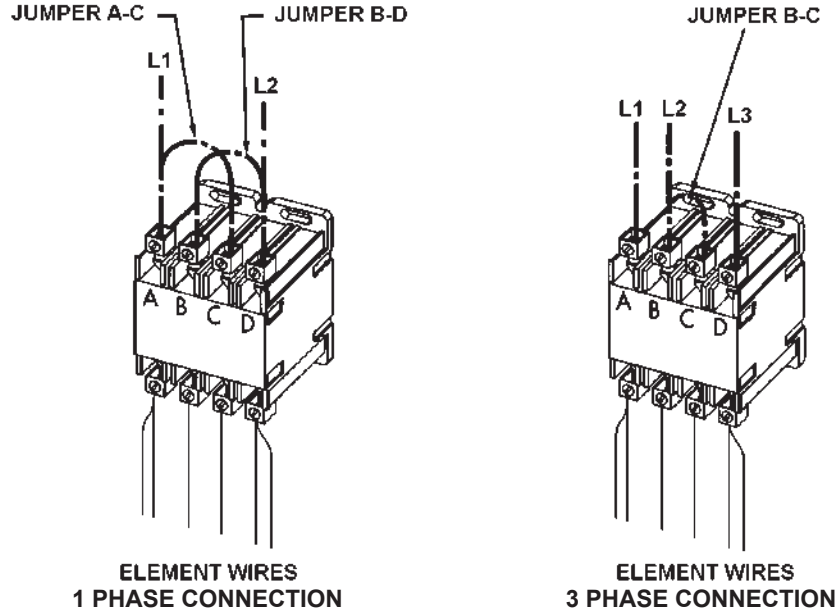
DIAGRAM 2.
SMALL COMMERCIAL WIRE DIAGRAM
208-240V / 3-1PH



3-1 PHASE CONVERSIONS

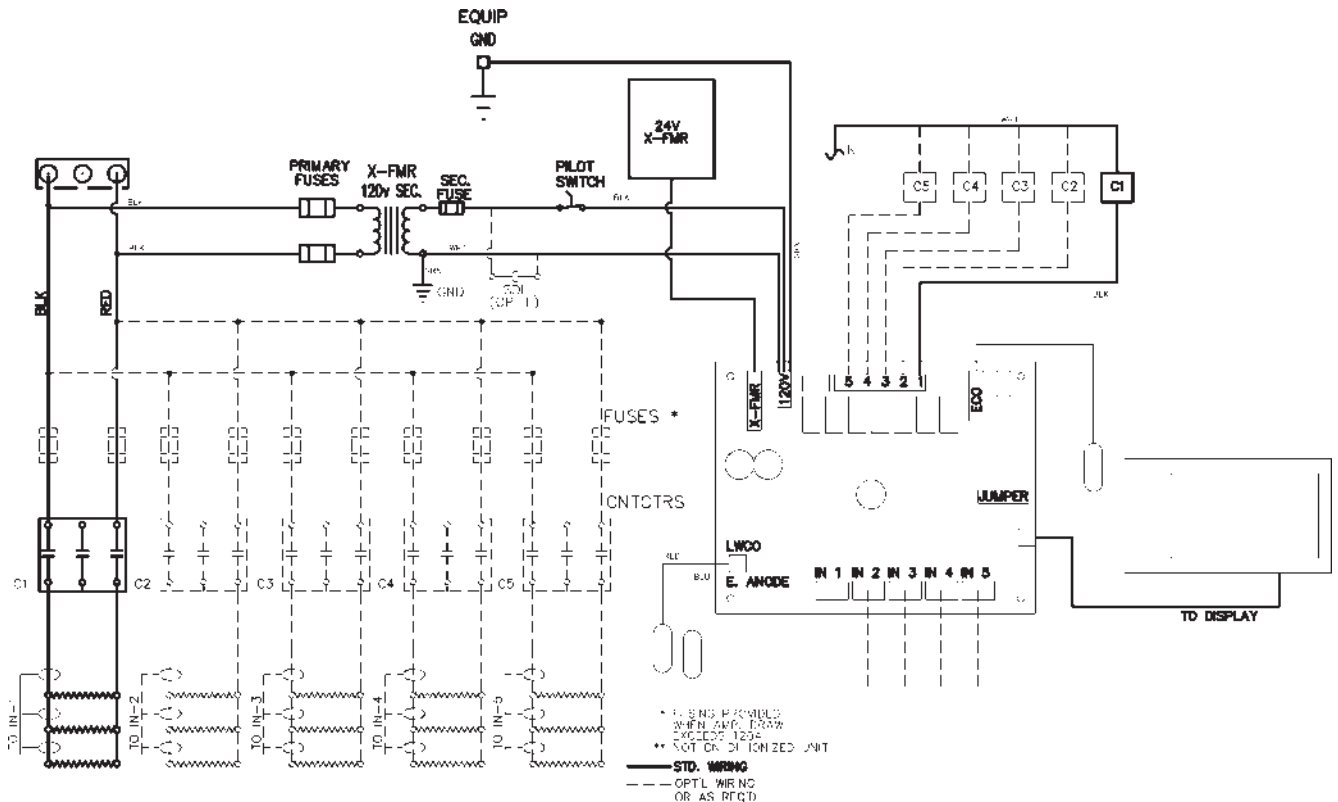
In the case where the unit is phase convertible and it has only one contactor, jumper wires (provided) must be added according to the phase of the supply voltage. See the diagram below. For single-phase connection, jumpers A-C and B-D must be added. For three-phase connection, jumper B-C must be added.

3-1 PHASE CONTACTOR JUMPER CONFIGURATION

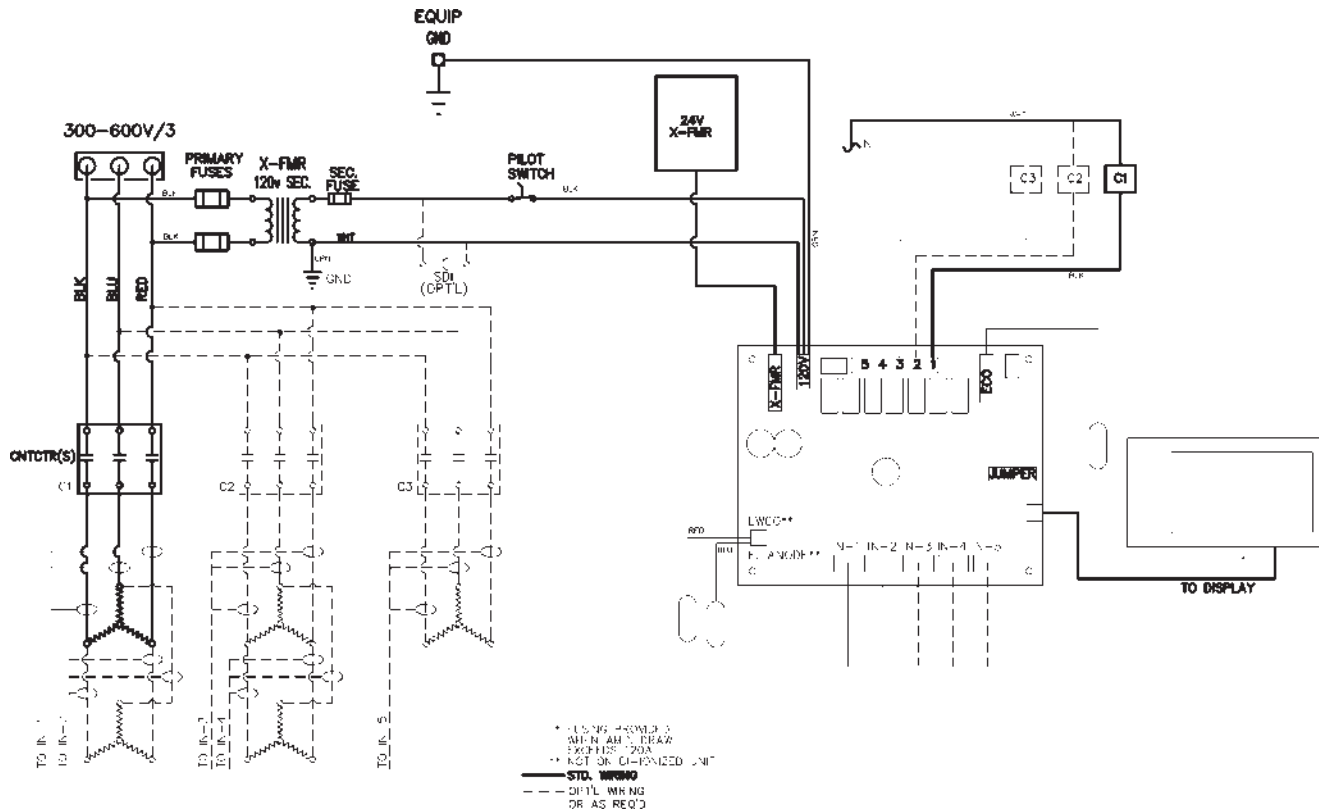


Printed on 12/5/2017 2:04 PM CT

DIAGRAM 3.
SMALL COMMERCIAL WIRE DIAGRAM
SINGLE PHASE



**DIAGRAM 4.
SMALL COMMERCIAL WIRE DIAGRAM
300-600V / 3PH**



**DIAGRAM 5.
SMALL COMMERCIAL ELECTRIC
300-600V 3ph, Linear or Progressive**

